

Raccordi ad ogiva in ottone

Brass compression fittings

Schneidringverschraubungen Messing

RG 51K

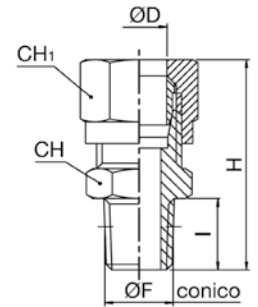


Diritto maschio conico BSPT

Male straight taper BSPT

Gerade Einschraubverschraubung konisches Gewinde

Codice/Code	ØD	F"	I	H	CH	CH1		
RG51K1804	4	R1/8	8	27	10	10		10
RG51K1806	6	R1/8	8	28	12	12		10
RG51K1406	6	R1/4	11	32.5	14	12		10
RG51K1808	8	R1/8	8	29.5	12	14		10
RG51K1408	8	R1/4	11	33	14	14		10
RG51K3808	8	R3/8	11.5	33	17	14		10
RG51K1410	10	R1/4	11	37.5	17	19		10
RG51K3810	10	R3/8	11.5	38	17	19		10
RG51K1210	10	R1/2	14	40.5	22	19		10
RG51K3812	12	R3/8	11.5	39	19	22		10
RG51K1212	12	R1/2	14	41	22	22		10
RG51K1214	14	R1/2	14	42.5	22	27		10
RG51K1215	15	R1/2	14	42.5	22	27		10
RG51K1216	16	R1/2	14	42	24	30		10
RG51K1218	18	R1/2	14	43	26	32		10



RG 51

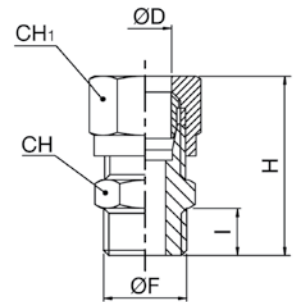


Diritto maschio cilindrico BSPP

Male straight parallel BSPP

Gerade Einschraubverschraubung zylindrisches Gewinde

Codice/Code	ØD	F"	I	H	CH	CH1		
RG511804	4	G1/8	6	25	14	10		10
RG511806	6	G1/8	6	26	14	12		10
RG511406	6	G1/4	8	29.5	17	12		10
RG511808	8	G1/8	6	27.5	14	14		10
RG511408	8	G1/4	8	30	17	14		10
RG513808	8	G3/8	9	30.5	19	14		10
RG511410	10	G1/4	8	34.5	17	19		10
RG513810	10	G3/8	9	36	19	19		10



RG 52

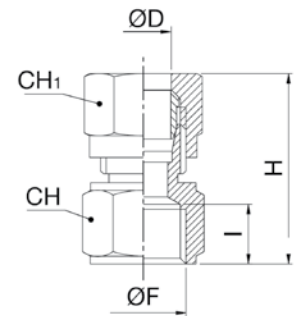


Femmina diritto cilindrico BSPP

Female straight parallel BSPP

Gerade Aufsraubverschraubung

Codice/Code	ØD	F"	I	H	CH	CH1		
RG521804	4	G1/8	8	24.5	14	10		10
RG521806	6	G1/8	8	26	14	12		10
RG521406	6	G1/4	11	30.5	17	12		10
RG521808	8	G1/8	8	26.5	14	14		10
RG521408	8	G1/4	11	31	17	14		10
RG523808	8	G3/8	11.5	31	20	14		10
RG521410	10	G1/4	11	35.5	17	19		10
RG523810	10	G3/8	11.5	36.5	20	19		10
RG523812	12	G3/8	11.5	37	20	22		10
RG521212	12	G1/2	15	38.5	24	22		10
RG521214	14	G1/2	15	40	24	27		10
RG521215	15	G1/2	15	40.5	24	27		10
RG521216	16	G1/2	15	41.5	24	30		10
RG521218	18	G1/2	15	43	26	32		10



RG 53

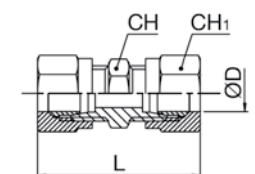


Diritto intermedio

Straight intermediate

Gerader Verbinder

Codice/Code	ØD	L	CH	CH1				
RG530004	4	33.5	10	10				10
RG530006	6	36.5	12	12				10
RG530008	8	38.5	14	14				10
RG530010	10	47.5	17	19				10
RG530012	12	50.5	19	22				10
RG530014	14	55.5	24	27				10
RG530015	15	55.5	24	27				10
RG530016	16	58	24	30				10
RG530018	18	60	26	32				10



Raccordi ad ogiva in ottone

Brass compression fittings

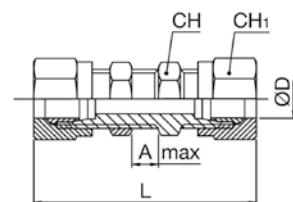
Schneidringverschraubungen Messing

RG **54**



Passalamiera
Union bulkhead
Schottverschraubung

Codice/Code	ØD	A max	L	CH	CH1			
RG540006	6	15.5	51.5	14	12			10
RG540008	8	16.5	55.5	16	14			10
RG540010	10	15.5	62.5	19	19			10
RG540012	12	16	64.5	22	22			10
RG540014	14	18	69.5	25	27			10
RG540015	15	18	69.5	25	27			10

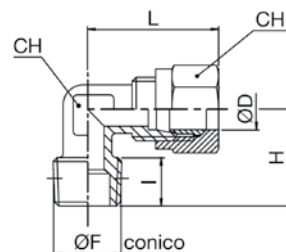


RG **55K**



Gomito maschio conico BSPT
Elbow male taper BSPT
Winkelverschraubung konisches Gewinde

Codice/Code	ØD	F"	I	H	L	CH	CH1	
RG55K1804	4	R1/8	8	16	21	9	10	10
RG55K1806	6	R1/8	8	16	22	9	12	10
RG55K1406	6	R1/4	11	20	24.5	11	12	10
RG55K1808	8	R1/8	8	17	24	11	14	10
RG55K1408	8	R1/4	11	20	24	11	14	10
RG55K3808	8	R3/8	11.5	24	27	13	14	10
RG55K1410	10	R1/4	11	23.5	32	13	19	10
RG55K3810	10	R3/8	11.5	24	32	13	19	10
RG55K1210	10	R1/2	14	28.5	14	15	19	10
RG55K3812	12	R3/8	11.5	25.5	34.5	15	22	10
RG55K1212	12	R1/2	14	28.5	34.5	15	22	10
RG55K1214	14	R1/2	14	30	38	17	27	10
RG55K1215	15	R1/2	14	30	38	17	27	10
RG55K1216	16	R1/2	14	31.5	39.5	19	30	10
RG55K1218	18	R1/2	14	34	44	22	32	10

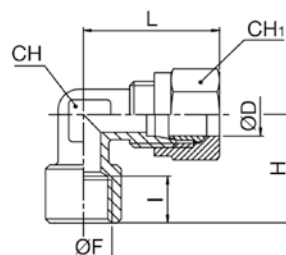


RG **55F**



Gomito femmina cilindrico BSPP
Elbow female parallel BSPP
Winkelaufschraubverschraubung

Codice/Code	ØD	F"	I	H	L	CH	CH1	
RG55F1804	4	G1/8	8	20	22	9	10	10
RG55F1806	6	G1/8	8	20	24	9	12	10
RG55F1406	6	G1/4	11	25.5	27	13	12	10
RG55F1808	8	G1/8	8	20	24	11	14	10
RG55F1408	8	G1/4	11	25.5	27.5	13	14	10

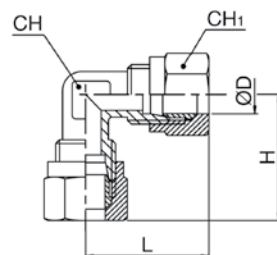


RG **56**



L intermedio
L Intermediate
Winkelverbindung

Codice/Code	ØD	H	L	CH	CH1			
RG560004	4	21	21	9	10			10
RG560006	6	23	23	9	12			10
RG560008	8	24	24	11	14			10
RG560010	10	32	32	13	19			10
RG560012	12	34.5	34.5	15	22			10
RG560014	14	38	38	17	27			10
RG560015	15	38	38	17	27			10
RG560016	16	39.5	39.5	19	30			10
RG560018	18	44	44	22	32			10



Raccordi ad ogiva in ottone

Brass compression fittings

Schneidringverschraubungen Messing

RG **57K**

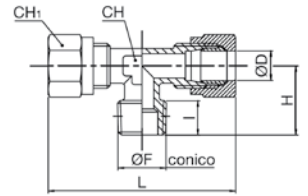


T al centro conico BSPT

Central T taper BSPT

T-Einschraubverschraubung, konisches Gewinde

Codice/Code	ØD	F"	I	H	L	CH	CH1	
RG57K1804	4	R1/8	8	16	42	9	10	10
RG57K1806	6	R1/8	8	16	46	9	12	10
RG57K1406	6	R1/4	11	20	48	11	12	10
RG57K1808	8	R1/8	8	17	48	11	14	10
RG57K1408	8	R1/4	11	20	48	11	14	10
RG57K3808	8	R3/8	11.5	24	54	13	14	10
RG57K1410	10	R1/4	11	23.5	64	13	19	10
RG57K3810	10	R3/8	11.5	24	64	13	19	10
RG57K3812	12	R3/8	11.5	25.5	69	15	22	10
RG57K1212	12	R1/2	14	28.5	69	15	22	10
RG57K1214	14	R1/2	14	30	76	17	27	10
RG57K1215	15	R1/2	14	30	76	17	27	10
RG57K1216	16	R1/2	14	31.5	79	19	30	10
RG57K1218	18	R1/2	14	34	88	22	32	10



RG **58K**

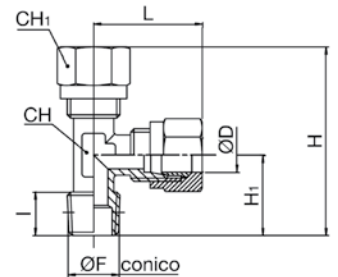


T laterale conico BSPT

Lateral T male taper BSPT

L-Verschraubung, drehbar, konisches Gewinde

Codice/Code	ØD	F"	I	H	H1	L	CH	CH1	
RG58K1804	4	R1/8	8	37	16	21	9	10	10
RG58K1806	6	R1/8	8	39	16	23	9	10	10
RG58K1406	6	R1/4	11	44.5	20	24.5	11	12	10
RG58K1808	8	R1/8	8	41	17	24	11	14	10
RG58K1408	8	R1/4	11	44	20	24	11	14	10
RG58K3808	8	R3/8	11.5	51	24	27	13	14	10
RG58K1410	10	R1/4	11	55.5	23.5	32	13	19	10
RG58K3810	10	R3/8	11.5	56	24	32	13	19	10
RG58K3812	12	R3/8	11.5	60	25.5	34.5	15	22	10
RG58K1212	12	R1/2	14	63	28.5	34.5	15	22	10
RG58K1214	14	R1/2	14	68	30	38	17	27	10
RG58K1215	15	R1/2	14	68	30	38	17	27	10
RG58K1216	16	R1/2	14	71	31.5	39.5	19	30	10
RG58K1218	18	R1/2	14	78	34	44	22	32	10



RG **59**

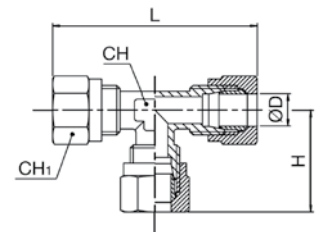


T intermedio

T intermediate

T-Verbinder

Codice/Code	ØD	H	L	CH	CH1			
RG590004	4	21	42	9	10			10
RG590006	6	23	46	9	12			10
RG590008	8	24	48	11	14			10
RG590010	10	32	64	13	19			10
RG590012	12	34.5	69	15	22			10
RG590014	14	38	76	17	27			10
RG590015	15	38	76	17	27			10
RG590016	16	39.5	79	19	30			10
RG590018	18	44	88	22	32			10



RG **60**

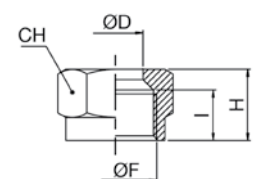


Dado

Nut

Überwurfmutter

Codice/Code	ØD	F"	I	H	CH			
RG600004	4	M8x1	7.5	11	10			10
RG600006	6	M10x1	8.5	11.5	12			10
RG600008	8	M12x1	9	12	14			10
RG600010	10	M16x1.5	11.5	15.5	19			10
RG600012	12	M18x1.5	11.5	15.5	22			10
RG600014	14	M22x1.5	12	17.5	27			10
RG600015	15	M22x1.5	12	17	27			10
RG600016	16	M24x1.5	12	17.5	30			10
RG600018	18	M26x1.5	12.5	18.5	32			10



Raccordi ad ogiva in ottone

Brass compression fittings

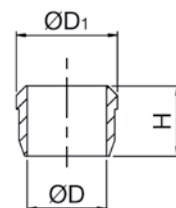
Schneidringverschraubungen Messing

RG **61**



Ogiva
Ogive
Klemmring

Codice/Code	ØD	ØD1	H						
RG610004	4	6	6						10
RG610006	6	8	7						10
RG610008	8	10	7						10
RG610010	10	13	10						10
RG610012	12	15	10						10
RG610014	14	17	10						10
RG610015	15	18	10						10
RG610016	16	19	10						10
RG610018	18	21	10.5						10

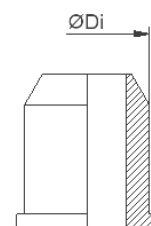


RG **62**



Boccola di supporto
Support Buckle
Verstärkungshülse

Codice/Code	ØDi								
RG620025	2.5								100
RG620004	4								100
RG620006	6								100
RG620008	8								100
RG620010	10								100
RG620012	12								100
RG620014	14								100
RG620015	15								100

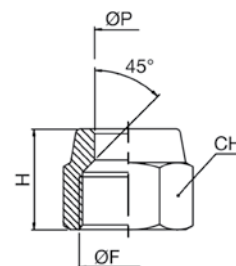


RG **70**



Dado bloccaggio tubo rame
Nut for fixture coperture
Mutter

Codice/Code	F"	ØP	CH	H					
RG703810	G3/8	10	19	16					10
RG703812	G3/8	12	19	16					10
RG701212	G1/2	12	24	20					10
RG701214	G1/2	14	24	20					10
RG701216	G1/2	16	24	20					10
RG703416	G3/4	16	30	23					10
RG703418	G3/4	18	30	23					10

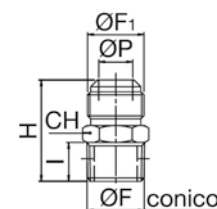


RG **72K**



Nipplo 45° fissaggio tubo rame
Nipple for fixture coperture
Nippel

Codice/Code	F"	F1"	ØP	I	H	CH			
RG72K3838	R3/8	G3/8	9	11.5	30	17			10
RG72K1212	R1/2	G1/2	11	14	35.5	22			10
RG72K3434	R1/2	G3/4	16	16	41.5	27			10



RG **75K**



Gomito 45° fissaggio tubo rame
Elbow for fixture coperture
Winkelverschraubung

Codice/Code	F"	F1"	ØP	I	H	L	CH		
RG75K3838	R3/8	G3/8	9	11.5	27	27	14		10
RG75K1212	R1/2	G1/2	11	14	28	28	17		10

