

HVAC CONTROL PRODUCTS

Actuators

Rotary Actuators for Ball Valves

M9108-xxx-5

(Joventa BAS1 / BAS2 / BMS1.1)

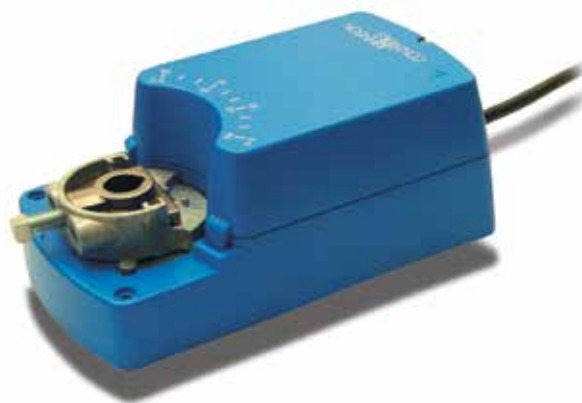
8 Nm, ON/OFF, Floating and Proportional Control
Rotary Actuators for Ball Valves

The M9108-xxx-5 electric actuator series have been developed for operating VG1000 series ball valves.

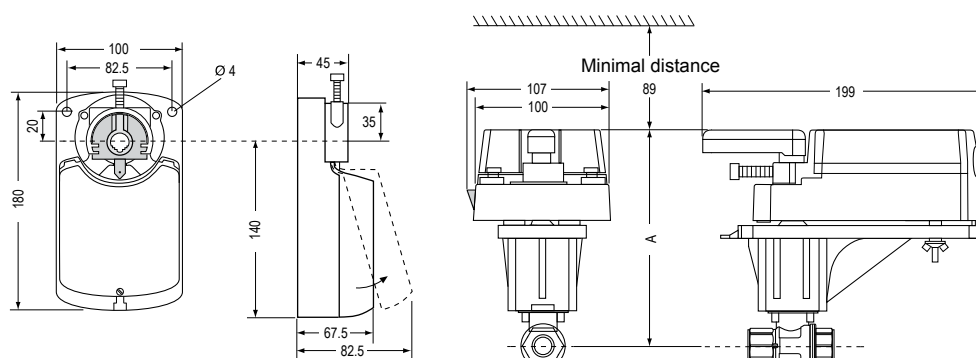
The actuators can be mounted onto the valves by the means of the M9000-525-5 linkage kit.

Features

- ON/OFF, Floating and Proportional Control
- Halogen-free connecting wire
- Load-independent running time
- Easy assembly on the console
- Selectable direction of rotation
- Manual adjustment by pushing the release button and turning the handle with position indicator (the release button does not automatically spring back into position)
- Automatic switching off in the limit positions



	A
DN15	160
DN20	160
DN25	162
DN32	173
DN40	177
DN50	182



Dimensions in mm

Ordering Codes		Torque	Running Time	Control Signals	2 x Auxiliary Contacts	Supply Voltage (50/60Hz)
Johnson Controls	Joventa					
M9108-AGA-5	BAS1	8 Nm	30 s	ON/OFF and Floating	---	AC/DC 24 V
M9108-AGC-5	BAS1.S				•	
M9108-ADA-5	BAS2				---	
M9108-ADC-5	BAS2.S			Modulating	•	AC 100...230 V
M9108-GGA-5	BMS1.1				---	
M9108-GGC-5	BMS1.1S				•	