

HVAC CONTROL PRODUCTS

Sensors

Room Temperature

TM-1100

Room Command Module

The TM-1100 series of room command modules are designed for use with the TC-9102, TC-9109 and TCU series of DDC terminal unit controllers.

The setpoint dial enables the room occupant to adjust the working set point of the controller within the range of 12...28 °C or -3...+3°, according to the model number.

The occupancy button enables the occupant to switch the mode of operation of the controller between COMFORT and STANDBY or to request a temporary COMFORT mode during NIGHT operation.

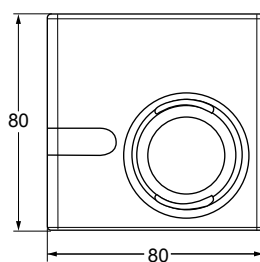
A LED indicator shows the current operating mode.

For TC-9102 and TCU fan coil unit controllers, a room command module with a 3-speed fan override is available. Models without a temperature sensing element are provided for application where the temperature sensor is mounted inside the fan coil unit.

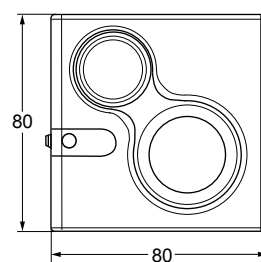
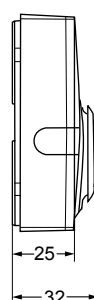


Features

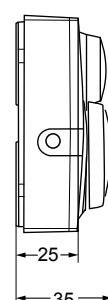
- Passive sensor
- NTC K2 temperature output
- Remote temperature setpoint adjustment
- 3-speed fan override
- Occupancy override button
- Room enclosures 80 x 80 mm
- Protection class: IP30



TM-1140-0000



TM-1160-0007 and TM-1170-0007



Dimensions in mm

Ordering Codes	Built-in Sensing Element	Temperature Setpoint Dial Scale	Fan Speed Override	Occupancy Button
TM-1140-0000	NTC K2	---	---	---
TM-1150-0000		•		
TM-1160-0000				12-28°C
TM-1160-0005				+/-
TM-1160-0002			12-28°C	
TM-1160-0007			3-Speed Fan Override	
TM-1170-0005	---			
TM-1170-0007	3-Speed Fan Override			
TM-1190-0000	NTC K2	12-28°C	---	---
TM-1190-0005		+/-		

Accessories (order separately)

Ordering Codes	Description
TM-1100-8931	Plastic base for surface mount
TE-9100-8501	Unit Mount NTC K2 Temperature Sensor (1.5 m Cable)
TM-9100-8900	Special Tool for opening enclosure